

Concluding 2 years of Research & Development by the Pacific Rim Business Council and Chamber in association with Vector International Pictures & Associates, Founder/C.E.O.Holmes Stoner has cobbled together an Iron-clad supply-line of Co-Modeco's with volume manufacturers in Asia while ramping up employment and commercial opportunities at the owner's end shipping destination.

Maximum output 6000 homes a month,  
Minimum 1.



Co-Modeco.com  
compact modular ecological



Concluding 2 years of Research & Development by the Pacific Rim Business Council & Chamber in association with Vector International Pictures & Associates, Founder/C.E.O. Holmes Stoner has cobbled together an iron clad supply-line of Co-Modeco's with volume manufacturers in Asia. An association with Co-Modeco also offers multiple employment opportunities and financial gains in our 'closed loop' business model.

Maximum output 6000 homes a month,  
Minimum 1.



## Co-Modeco.com

compact modular eco homes &  
commercial spaces



Team Co-Modeco & Associates, 'Welcome's You!

& All of your inquiries, question's & suggestions.  
info@co-modeco.com | 561-419-0303 office 24/7

Text 786-769-5845 media  
Text 310-220-9118 quote  
Text 310-437-9084 PRBC  
Text 561-212-7501 Dirigo



Co-Modeco.com  
compact modular ecological



Headquartered in Marina del Rey, California and Florida's Palm Beaches'; Co-Modeco Associates & Representatives aim to stem the tide of chronic (and soon to be critical) housing shortages with our proprietary, safe, sustainable, indestructible while surprisingly comfortable (and of greatest importance, truly affordable) homes & commercial Spaces-on or off the grid..

Maximum output 6000 Co-Modeco a Month, minimum 1.

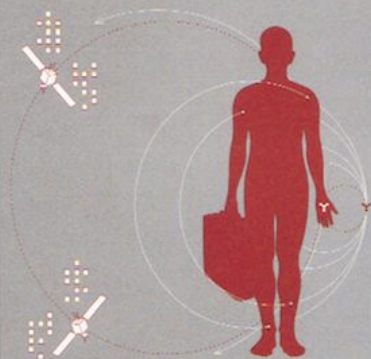


Co-Modeco.com

compact modular ecological



# TAKE A FLYING LEAP



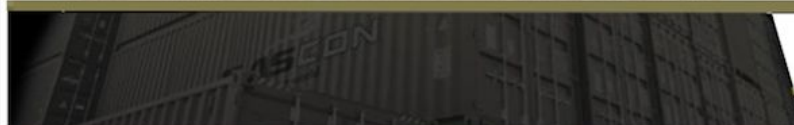
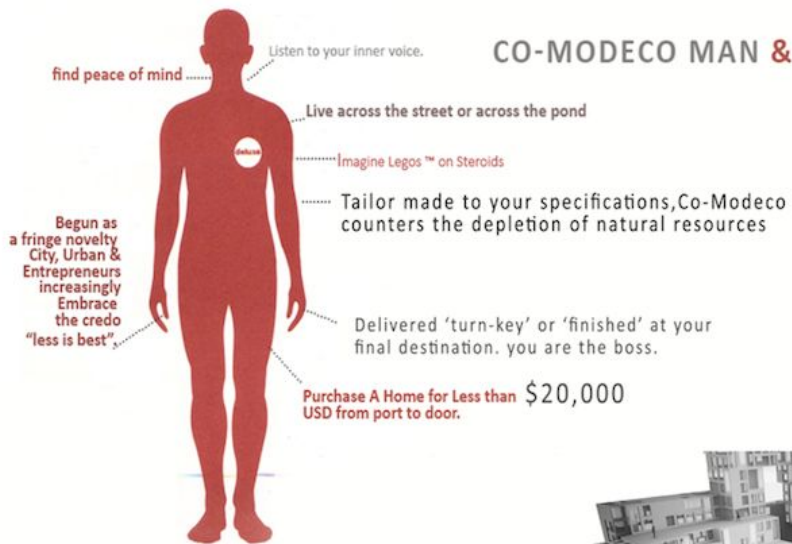
Co-Modeco.com

compact modular ecological

[read more.....](#)



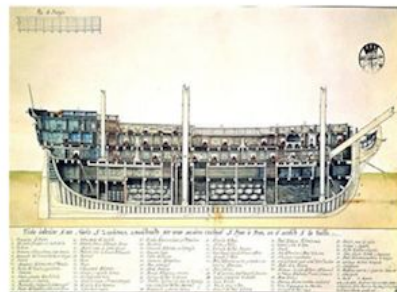
## CO-MODECO MAN & CO-MODECO WOMAN







he use of rudimentary containers to ship cargo began in the late 17th century. By the 1950s, Malcolm McLean of Sea-Land Shipping, Inc. pushed by the U.S. military to standardize their design, to build strong, uniform, theft-resistant, stackable shipping containers that were easy to load and unload by truck, rail and ship, and easy to store. And so, begins the genesis of sustainable mobile, eco , container homes.



our campus-future friendly





Welcome! to the future of sustainable, prefab, container living tailored to meet your every specification. **Co-Modeco**, in association with the **Pacific Rim Business Council** is the exclusive **Worldwide Marketing & Sales Representative** of Co-Modeco until **2021**. Compact Modular Eco (Co-Modeco) homes & commercial spaces are manufactured in Asia and exported all around the globe. All new - eco friendly components that adhere to the United States & Canada's exacting building standards and shipping container protocols.



The aspirational dream of home ownership a world away within your reach.



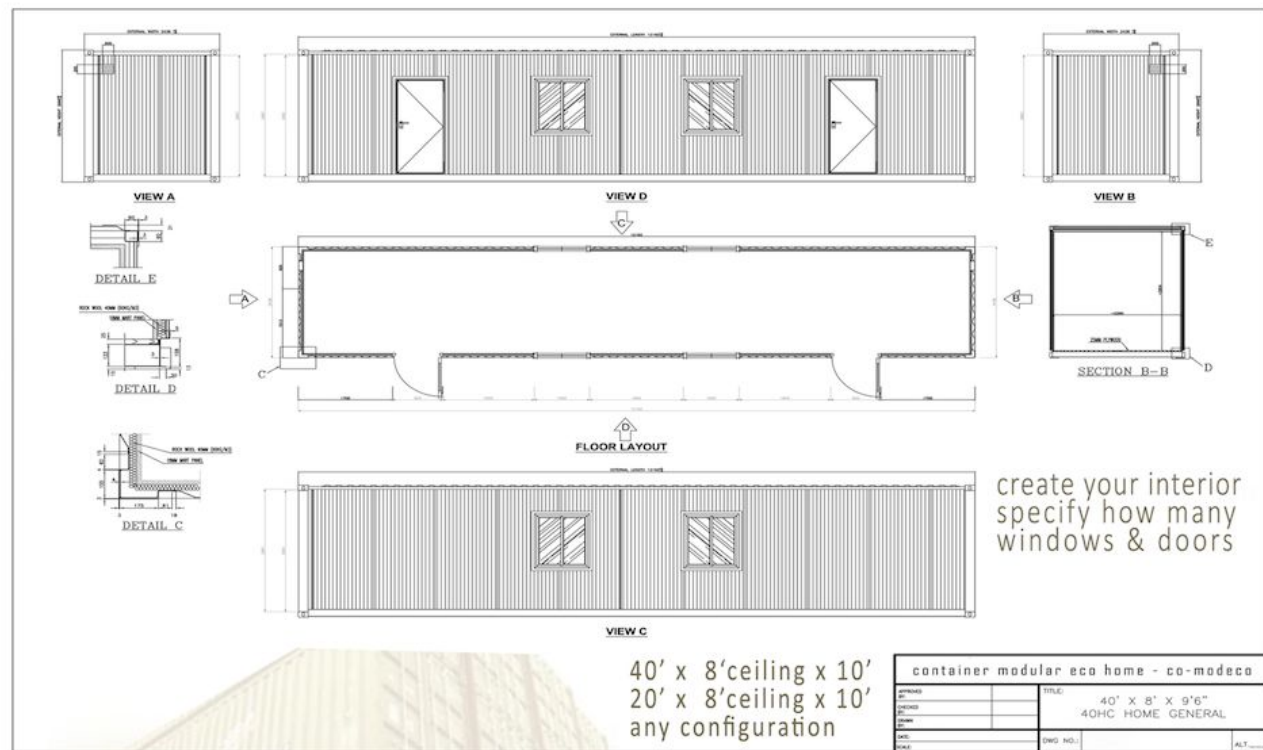
photo: Holmes Stoner - Cascon Factory 2015





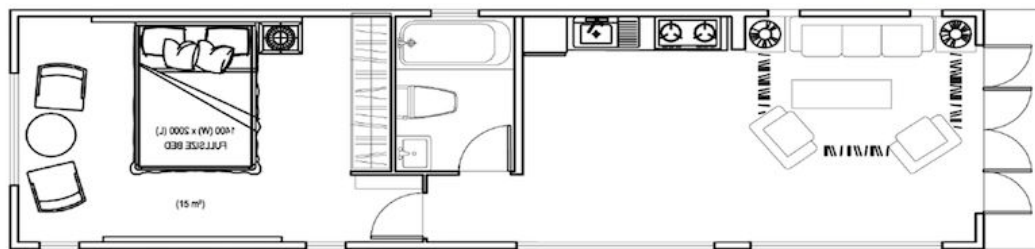
Container Modular Eco Home Show Model  
On Display - Los Angeles, CA







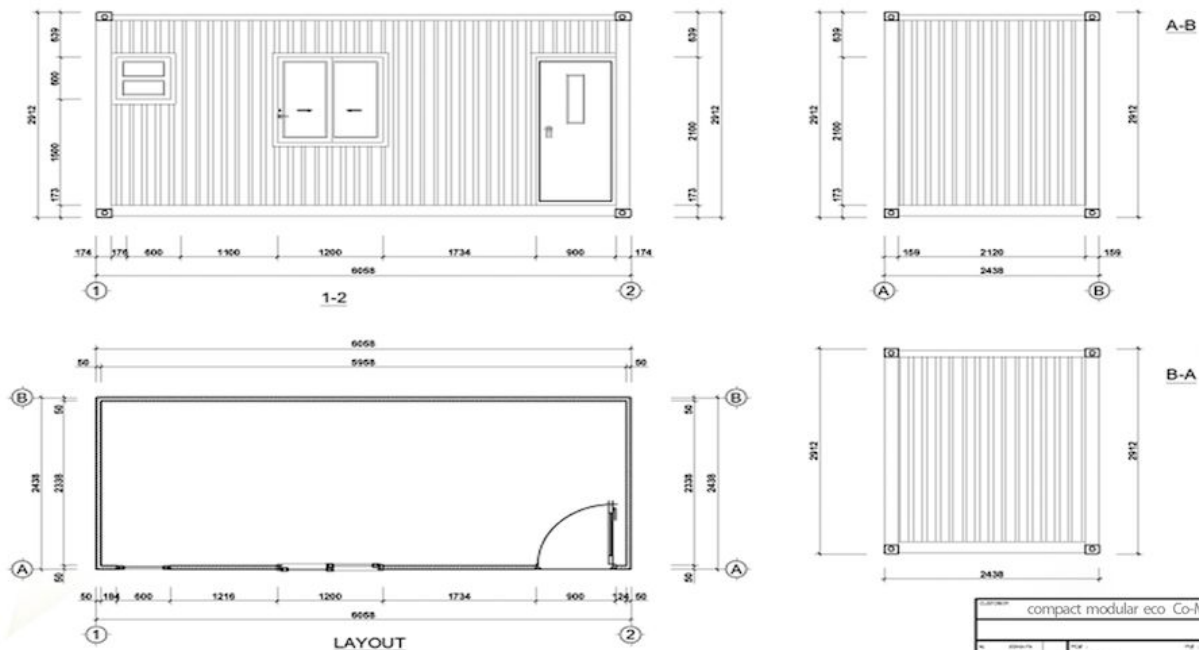
## EXPAT CONCEPT - DESIGNS



**House stackable various purpose : kindergaten, school, accomodation, clinic**



# 20HC-ROOM-V2



compact modular eco Co-Modeco			
PROJ. NO.	20HC-ROOM-V2	DATE	2023-03-12
DESIGNER	20HC-HOME	REVISION	01
20HC-HOME GENERAL DRAWING			
SCALE	1:50	DATE	2023-03-12









SHIPPING RECEIPT - ARRIVAL DATE - PORT OF LOS ANGELES - NOVEMBER 5 TO 10, 2015



INTERLINE CORPORATION

**BILL OF LADING**

SHIPPER (Principal or Seller-licensee and address) <b>VIETNAM CONSULTANT INVESTMENT JSC</b> NO.2A/94 HOANG MAI, HOANG MAI DIST., HA NOI VIET NAM		BOOKING NUMBER <b>954829722</b>	
		EXPORT REFERENCES	
CONSIGNEE (Non-negotiable unless consigned to order) PACIFIC RIM BUSINESS COUNCIL HOLMES H. STONER JR. FOUNDER/CHAIRMAN 4337 MARINA CITY DRIVE SUITE 341 MARINA DEL REY, CA. 90292 OFFICE 310 301 8090 MOBILE 310 437 908		FORWARDING AGENT (References)	
NOTIFY PARTY INTERMEDIATE CONSIGNEE (Name and address) SAME AS CONSIGNEE		POINT AND COUNTRY OF ORIGIN	
PRE-CARRIA BY		PLACE OF RECEIPT <b>HAIPHONG, VIETNAM</b>	ROUTING INSTRUCTIONS
OCEAN VESSEL <b>PACIFIC PEARL</b>	VOY. NO. <b>308N</b>	PORT OF LOADING <b>HAIPHONG, VIETNAM</b>	
PORT OF DISCHARGE <b>LOS ANGELES</b>		PLACE OF DELIVERY <b>LOS ANGELES</b>	
		TO OBTAIN DELIVERY, CONTACT:	
MARKS AND NUMBERS	NO. OF PKGS	DESCRIPTION OF PACKAGES AND GOODS	
FCL/FCL CONT/SEAL: PREU0215810 PREU0215910		PARTICULARS FURNISHED BY SHIPPER 02 x 20'HC CONTAINER STC: N.W: 5,000.00 KGS OFFICE CONTAINER	GROSS WEIGHT 5,000.00 KGS  MEASUREMENT 60.000 CBM
FREIGHT RATES, CHARGES, WEIGHTS AND/OR MEASUREMENTS			
SUBJECT TO CORRECTION	PREPAID PP	COLLECT	
		DATED AT <b>14-Oct-2015 HANOI, VIETNAM</b>	
		CITY COUNTRY	
		BY <b>INTERLINE CORPORATION</b>	
		AS AGENT FOR	





CoMoDeco are re-imagined living habitat's.

Each unit may be customized. Components are NEW. NOT recycled shipping containers.

Tailored to the buyers needs and requirements and zoning specifications.

Our future friendly container structures are eco-friendly,energy-efficient, earthquake, cyclone - hurricane-flood - & war resistant."

We provide what should be an inalienable right to all humankind a **safe shelter**.

We offer turnkey packages and ship all over the world.



CoMoDeco's are built to sustain a 10 point cyclone, 8 point earthquake and 75 mile an hour winds, with a shelf life of 35 to 50 yearsr.



www

com



dream

design

order

have a cup  
of  
coffee

move-in

## DESCRIPTION-FLOOR PLANS - DESIGN

Co-Modeco modular dwellings consist of an A Grade, galvanized, steel structural system and color bond sandwich panels.

*t*

Insulated with EPS, PU, ROCKWOOL, XPS, can be built to meet LEED specifications. Floors are inlaid with wood, wall treatments, paneling are per the owner's specifications. Furnishings and fixtures are optional and plumbing and electricity is fully installed

Utilizing new steel components that conform to the same protocols of shipping containers to expedite costs for shipping, freight and transport. Standard size is 20' x 10' x 8' (6058\*2438\*2591mm) or 40' x 10' x 8' (12192 x 2438 x 2896 mm) or variations thereof.

Units can be doubled, single, Tshaped side by side or elevated to 3 stories without a grid. Roofs are offered with optional solar panels, roof top gardens, and wi-fi installed.







Co-Modeco Structures -Delivered  
Turn-key -On or Off the Grid  
Conatiner Modular Eco Homes



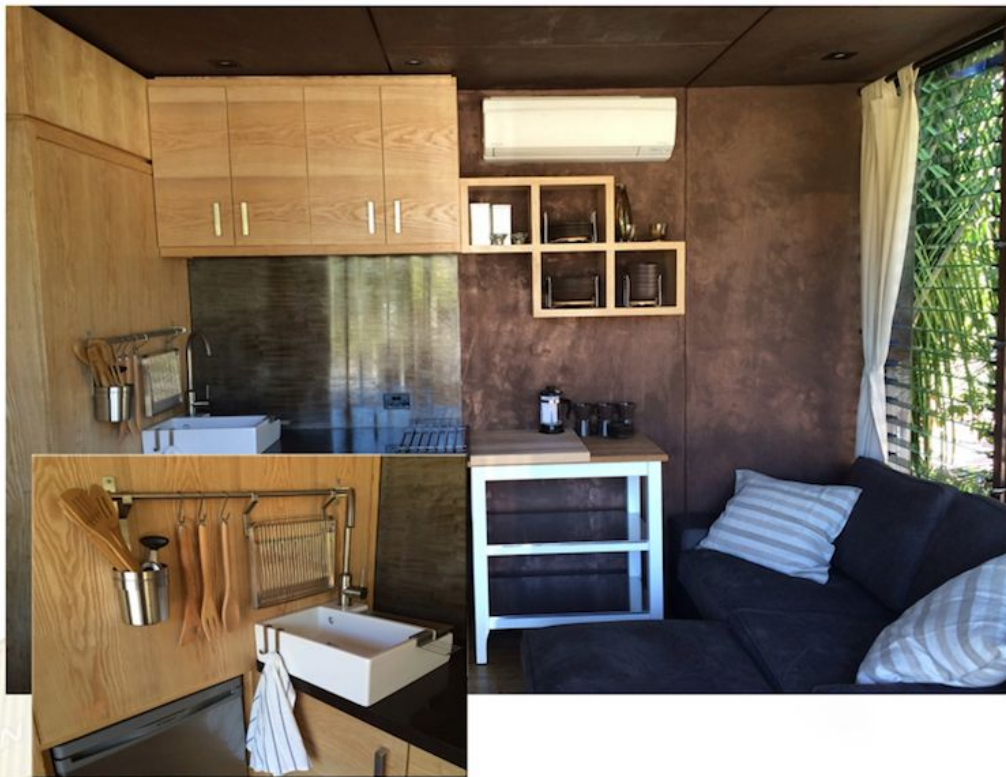
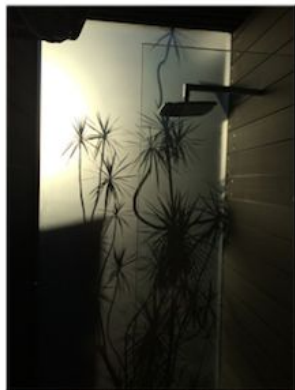














Andrea Guardino - Santa Monica Public Relations



Daniel Stanford - Creative Director- Ambiance



Francios Huynh -Associate- Adavenue Group



Cristiane Roget - Partner -VIPictures.com



Holmes Stoner - Director -Founder -  
Pacific Rim Business Council  
Director Co-Modeco Homes  
Marina del Rey, California



Cathy Hoang - Partner - Production Manager



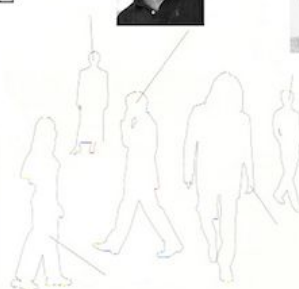
Giovanni Benjamin - V.P. Sales & Social Media



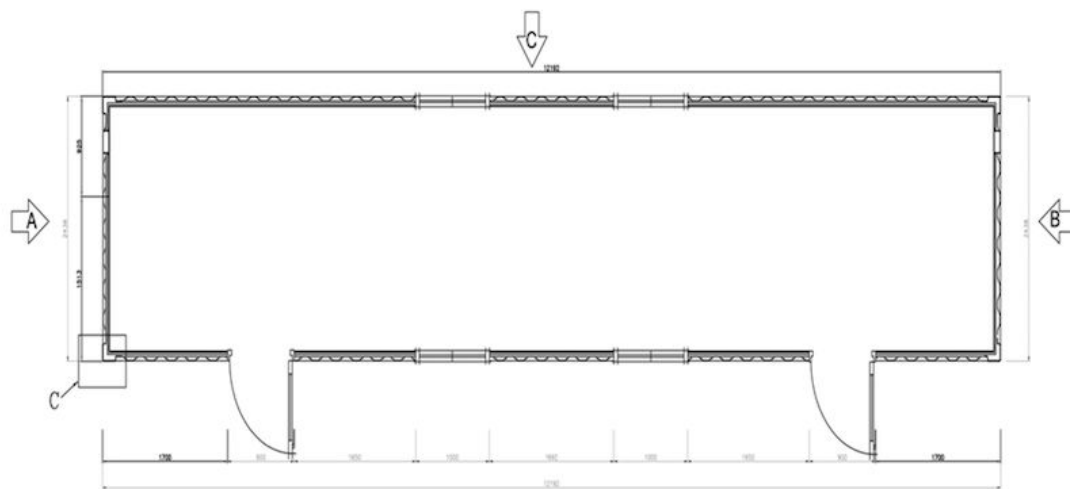
Eduardo Villanueva - Syrunner - Webmaster



Christian Johnston - Media - ComplexFilms







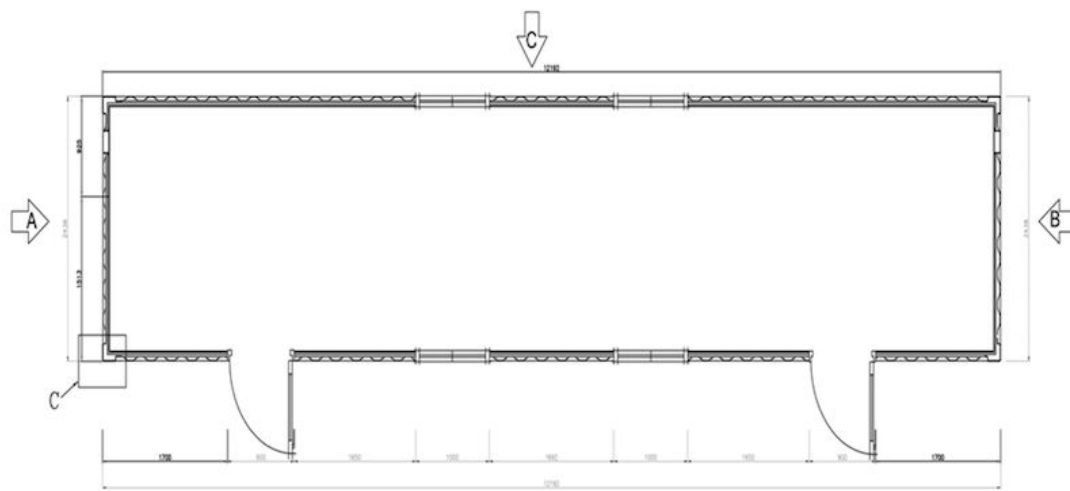
↑  
D  
**FLOOR LAYOUT**

create your interior  
specify how many  
windows & doors

compact modular eco home - co-mo-deco

note: you are only limited by your imagination.





↑ D  
**FLOOR LAYOUT**

create your interior  
specify how many  
windows & doors

compact modular eco home - co-mo-deco

note: you are only limited by your imagination.





# Co-Modeco

## compact modular eco homes & commercial



*t*

You have Questions?

We have Answers.!

Let's explore your purchase of a single CoMoDeco prototype, customized dwelling or multiple units at costs beginning at \$17,500 usd.

Whether your goal is to alleviate chronic housing shortage, begin a business of your own, emergency relief, or to attain the aspirational dream of home ownership, Co-MoDeco is the future firendly solution.

Please contact us immediately if you would like to be further enlightened about 'our dwellings for a future'.





*when will a safe  
habitat become  
an inalienable  
human right ?*

